

1 Complète comme dans l'exemple.

$$39 = (6 \times 6) + 3$$

$$61 = (10 \times \underline{\quad}) + \underline{\quad}$$

$$25 = (3 \times \underline{\quad}) + \underline{\quad}$$

$$43 = (8 \times \underline{\quad}) + \underline{\quad}$$

$$19 = (8 \times \underline{\quad}) + \underline{\quad}$$

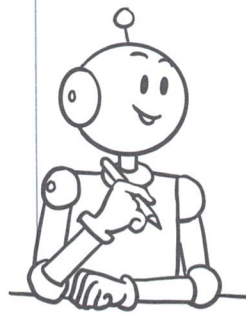
$$57 = (7 \times \underline{\quad}) + \underline{\quad}$$

$$34 = (4 \times \underline{\quad}) + \underline{\quad}$$

$$75 = (8 \times \underline{\quad}) + \underline{\quad}$$

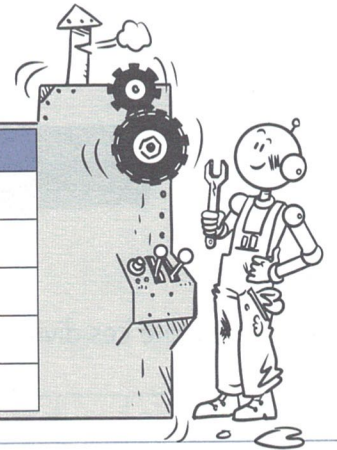
$$29 = (5 \times \underline{\quad}) + \underline{\quad}$$

$$83 = (9 \times \underline{\quad}) + \underline{\quad}$$



2 Complète le tableau en t'aidant de ta calculatrice.

| Dividende | Diviseur | Quotient |
|-----------|----------|----------|
| 984       | 12       |          |
|           | 34       | 3        |
| 1281      |          | 21       |
| 1815      | 55       |          |
|           | 65       | 24       |



3 Complète comme dans l'exemple.

$$18 : 10 = \underline{\quad} \rightarrow \text{Il reste } \underline{\quad} .$$

$$27 : 10 = \underline{\quad} \rightarrow \text{Il reste } \underline{\quad} .$$

$$36 : 10 = \underline{\quad} \rightarrow \text{Il reste } \underline{\quad} .$$

$$83 : 10 = \underline{\quad} \rightarrow \text{Il reste } \underline{\quad} .$$

$$234 : 10 = \underline{\quad} \rightarrow \text{Il reste } \underline{\quad} .$$

$$48 : 10 = 4 \rightarrow \text{Il reste } 8 .$$

