

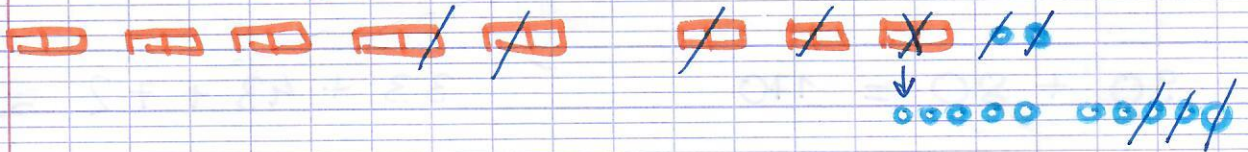
Correction des mathématiques (Lundi 18 mai 2020)

① Calcul mental:

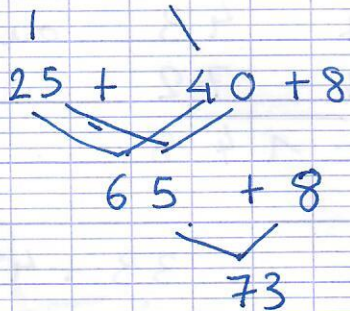
oustractions: $57 - 19 = 38$



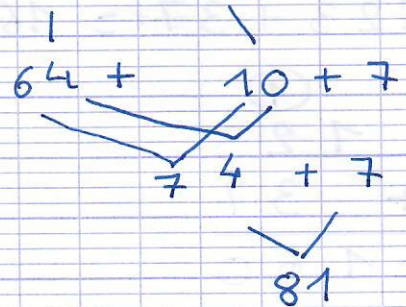
$82 - 45 = 37$



Additions: $25 + 48 = 73$



$64 + 17 = 81$



② Pose en colonne puis calcule :

$$\begin{array}{r} \textcircled{1} \textcircled{1} \\ 158 \\ + \quad 69 \\ + \quad \quad 7 \\ \hline 224 \end{array}$$

$$\begin{array}{r} \textcircled{1} \textcircled{1} \\ 53 \\ + 271 \\ + \quad 47 \\ \hline 371 \end{array}$$

$$\begin{array}{r} 4 \\ 4812 \\ - 127 \\ \hline 325 \end{array}$$

$$\begin{array}{r} 8 \\ 8174 \\ - 382 \\ \hline 592 \end{array}$$