

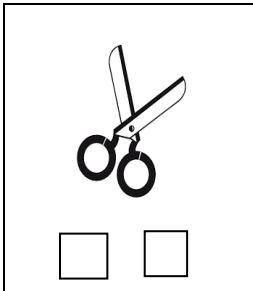
Domaine : Mobiliser le langage : phonologie

Colorie la « syllabe » dans laquelle tu entends le son « i »

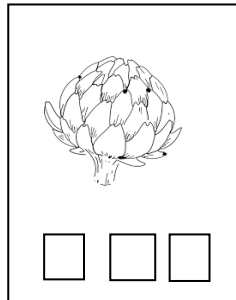
A : Manipuler des syllabes

O : Repérer la place d'un son dans un mot prononcé

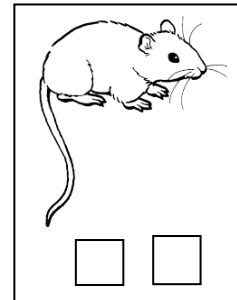
Ciseaux



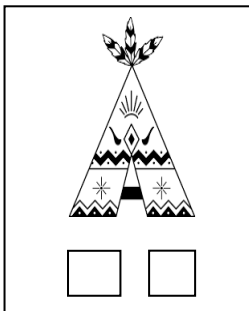
Artichaut



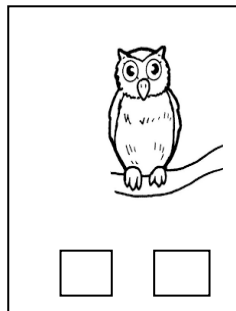
Souris



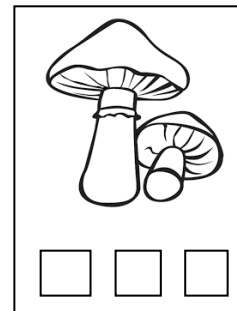
Tipi



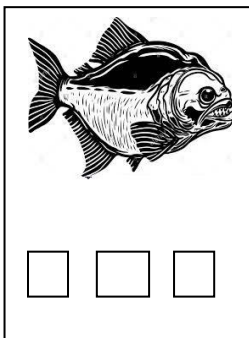
Hibou



Champignons



Piranha



Boulangerie



Otarie

