

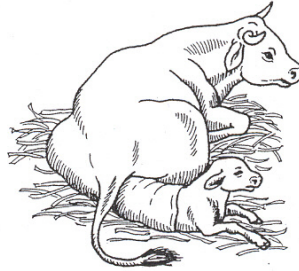
LES ANIMAUX SE REPRODUISENT (FICHE 1)

1/ **ECRIS** au crayon à papier le nom de chaque animal au dessus de chacun

2/ **ENTOURE** en **JAUNE** les œufs et en **ROUGE** les bébés nés vivants :



1

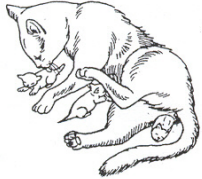


5

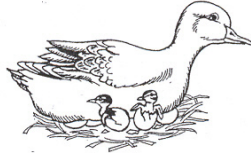
3/ **COMPLETE** le tableau:

Œufs

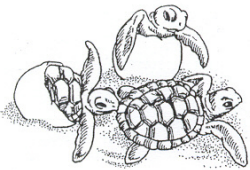
Pas d'œuf



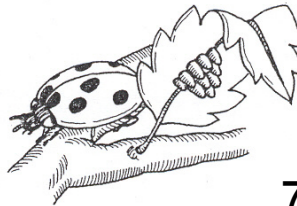
2



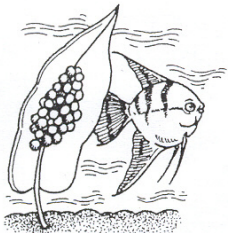
6



3



7



4