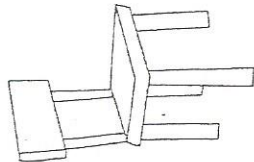


Consignes:

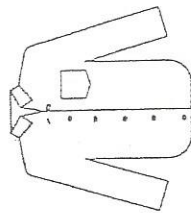
Dis le nom de chaque objet dessiné.

Colorie en **Bleu** les dessins dont le nom contient le son "ch".

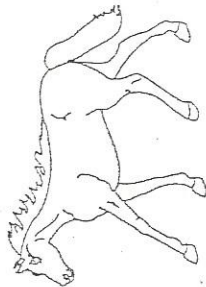
Colorie en **Vert** les dessins dont le nom contient le son "j".



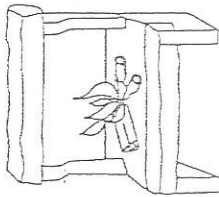
chaise



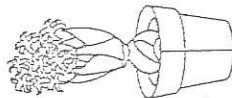
chemise



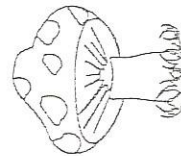
cheval



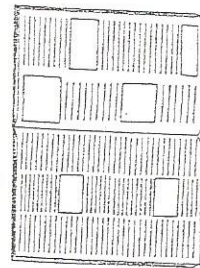
cheminée



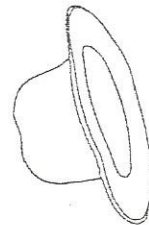
jacinthe



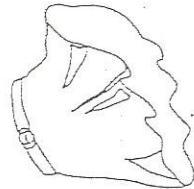
champignon



journal



chapeau



jupe

Consignes:

Dis le nom de chaque objet dessiné.

Colorie en **Bleu** les dessins dont le nom contient le son "ch".

Colorie en **Rouge** les dessins dont le nom contient le son "s".

