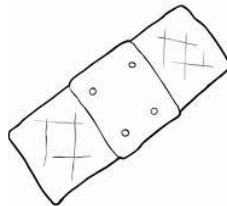
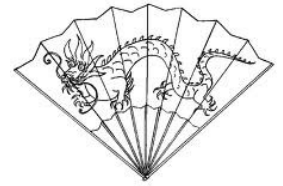
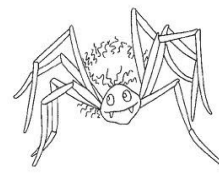
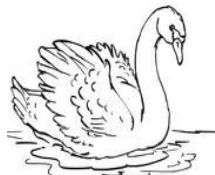


J'entends [n], je vois gn, gn

**1. Colorie si tu entends [n].**



**2. Mets une croix où tu entends [n].**



--	--	--

--	--	--	--

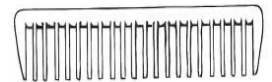
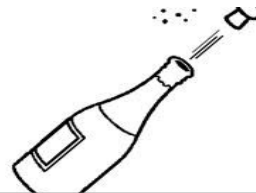
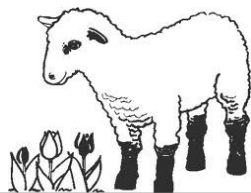
--	--

--	--	--

--	--

**3. Écris les noms sous les dessins en utilisant les syllabes suivantes :**

cham - greau - pei - a - gre - ta - gre - mon - gre - pa



gre - châ - li - gre - cam - gnou - tai - pa - tro - gre

