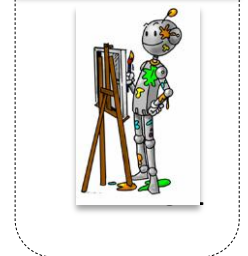
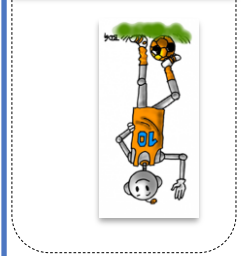
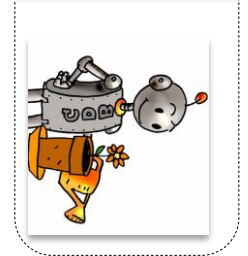
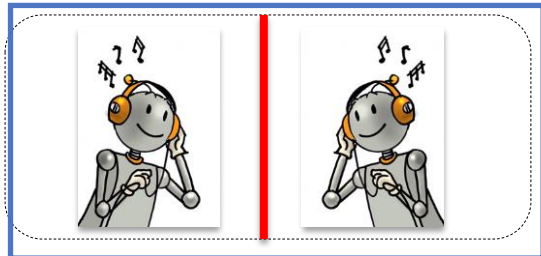
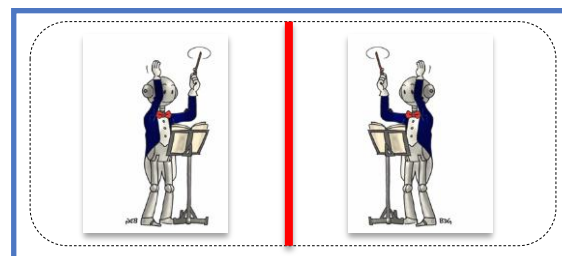
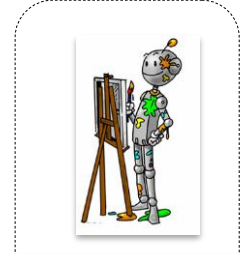
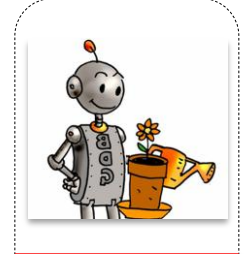
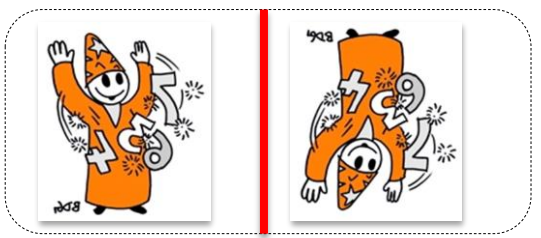
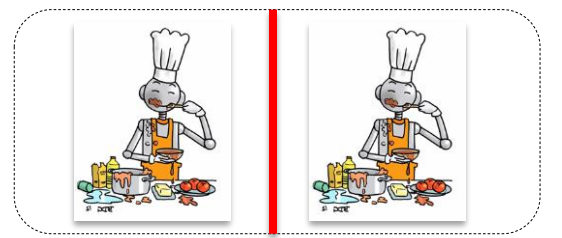
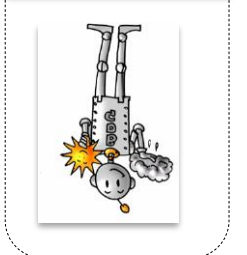
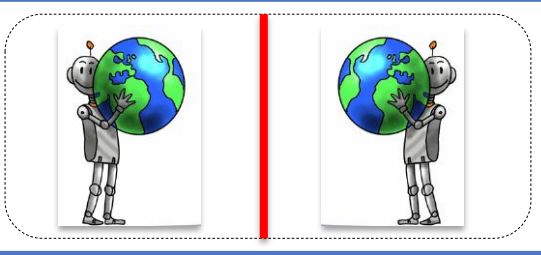
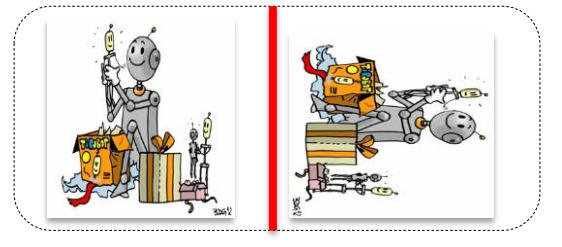
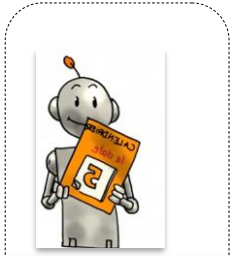
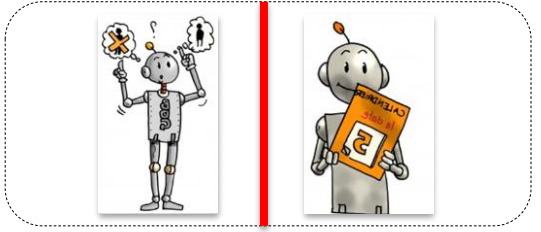
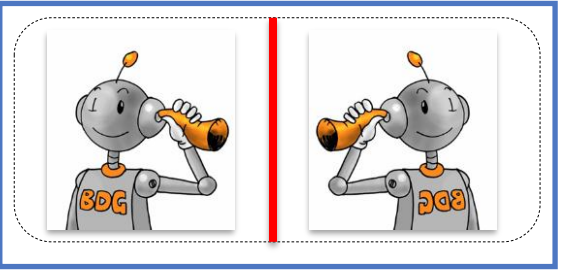
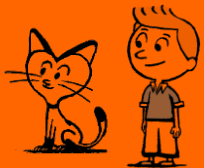


# Géométrie

## La symétrie

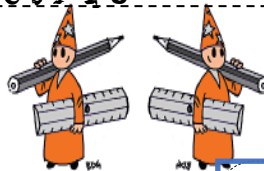
1 Entoure les paires qui sont symétriques.



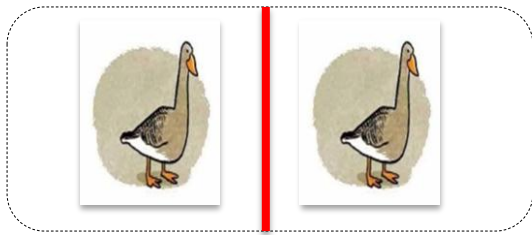
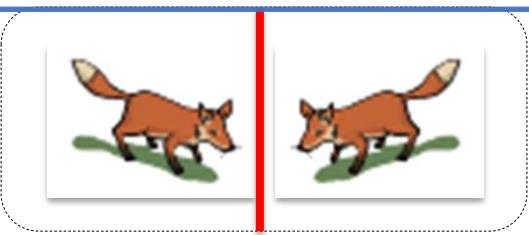
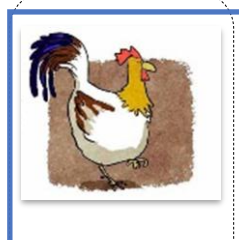
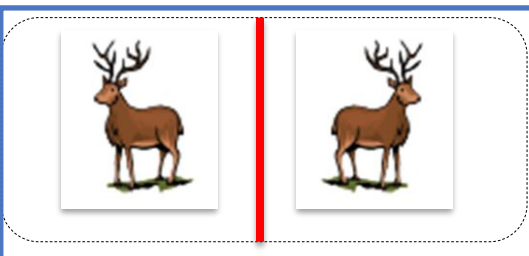
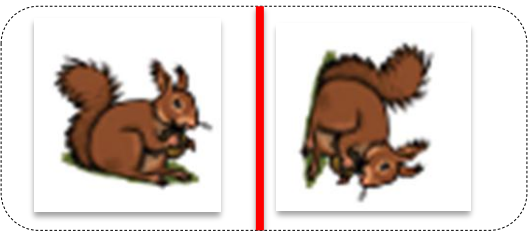
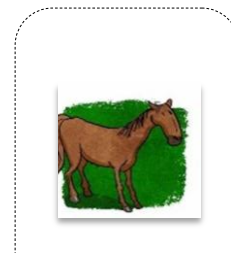
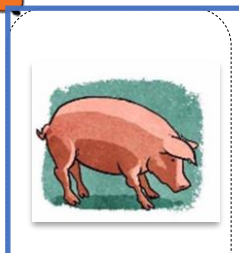
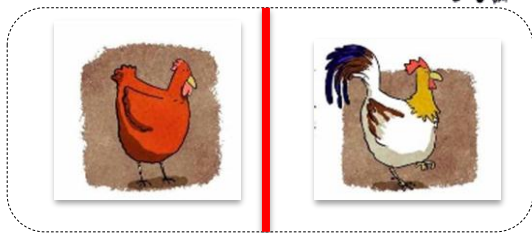
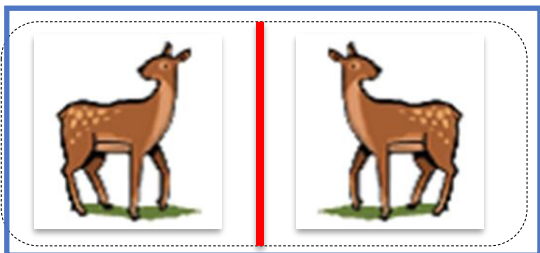


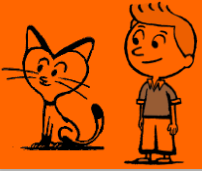
# Géométrie

## La symétrie



1 Entoure les paires qui sont symétriques.

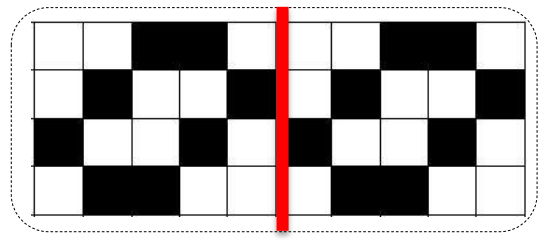
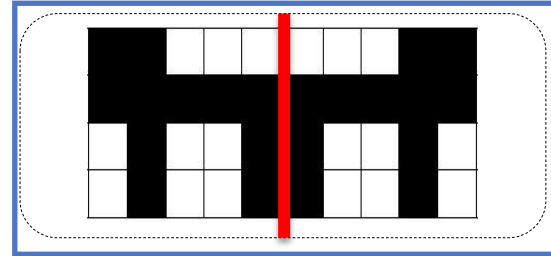
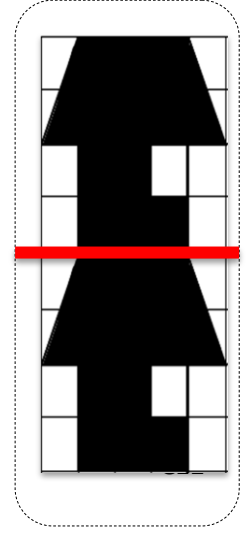
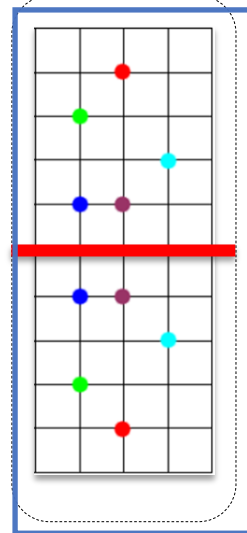
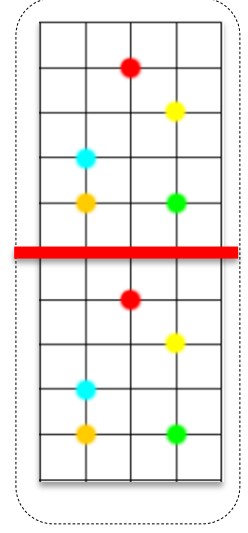
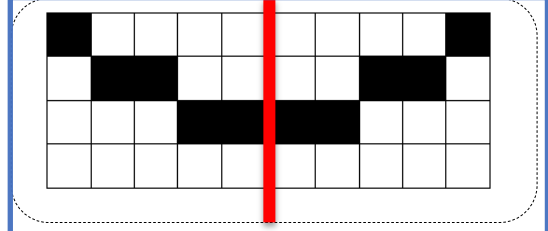
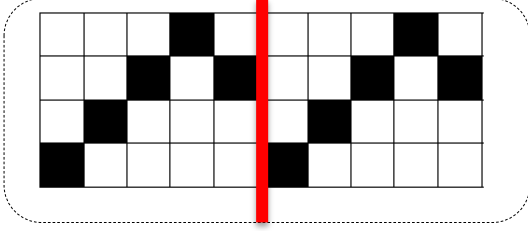
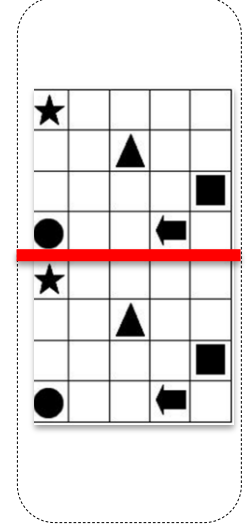
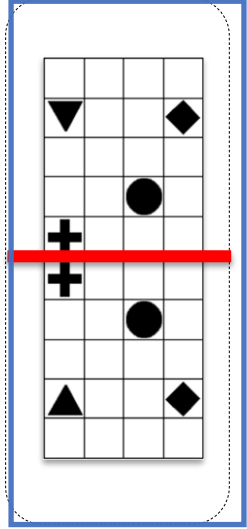
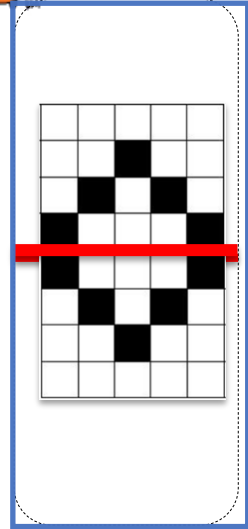
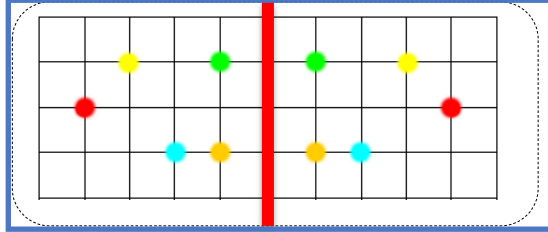
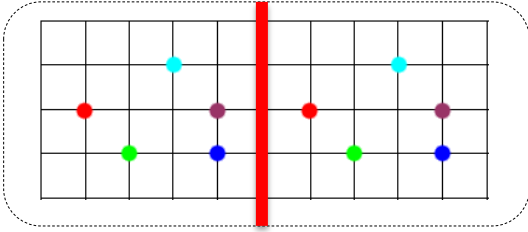


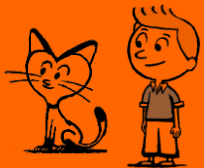


# Géométrie

## La symétrie

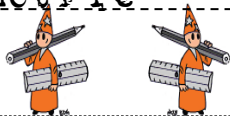
1 Entoure les paires qui sont symétriques.





# Géométrie

## La symétrie



1 Choisis le symétrique par rapport à l'axe.

Grid 1: A 5x5 grid with a vertical red axis on the right. The left side contains a star at (1,1), a square at (2,3), a circle at (2,4), and a right-pointing arrow at (3,4). A question mark is to the right.

Options:
 

- Option 1: A 5x5 grid with a star at (1,1), a square at (2,3), a circle at (2,4), and a right-pointing arrow at (3,4).
- Option 2: A 5x5 grid with a triangle at (1,3), a circle at (2,1), a square at (2,3), a right-pointing arrow at (2,4), and a star at (4,5).

Grid 2: A 5x5 grid with a vertical red axis on the left. The right side contains a left-pointing arrow at (1,2), a circle at (1,3), a square at (2,3), a star at (2,5), a downward-pointing triangle at (3,2), and a right-pointing arrow at (3,4). A question mark is to the left.

Options:
 

- Option 1: A 5x5 grid with a star at (1,1), a square at (2,3), a circle at (2,4), and a right-pointing arrow at (3,4).
- Option 2: A 5x5 grid with a triangle at (1,3), a circle at (2,1), a square at (2,3), a right-pointing arrow at (2,4), and a star at (4,5).

Grid 3: A 5x5 grid with a horizontal red axis on the bottom. The top part contains a star at (1,4), a square at (2,3), a left-pointing arrow at (3,1), a circle at (3,2), and a right-pointing triangle at (3,4). A question mark is below.

Options:
 

- Option 1: A 5x5 grid with a star at (1,4), a square at (2,3), a left-pointing arrow at (3,1), a circle at (3,2), and a right-pointing triangle at (3,4).
- Option 2: A 5x5 grid with a circle at (1,2), a square at (2,3), a left-pointing arrow at (2,1), a right-pointing triangle at (2,4), and a star at (4,5).

Grid 4: A 5x5 grid with a vertical red axis on the right. The left side contains a plus sign at (1,2), a circle at (1,3), a right-pointing triangle at (1,4), and a star at (2,4). A question mark is to the right.

Options:
 

- Option 1: A 5x5 grid with a triangle at (1,1), a circle at (1,3), a plus sign at (1,4), and a star at (2,1).
- Option 2: A 5x5 grid with a star at (1,2), a plus sign at (1,4), a circle at (2,3), and a triangle at (2,1).

Grid 5: A 5x5 grid with a vertical red axis on the left. The right side contains a star at (1,1), a triangle at (1,4), a square at (2,3), a circle at (2,4), and a right-pointing arrow at (3,4). A question mark is to the left.

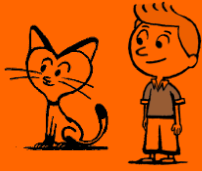
Options:
 

- Option 1: A 5x5 grid with a star at (1,1), a square at (2,3), a circle at (2,4), and a right-pointing arrow at (3,4).
- Option 2: A 5x5 grid with a triangle at (1,3), a circle at (2,1), a square at (2,3), a right-pointing arrow at (2,4), and a star at (4,5).

Grid 6: A 5x5 grid with a horizontal red axis on the bottom. The top part contains a star at (1,4), a plus sign at (1,2), a circle at (1,3), and a right-pointing triangle at (1,4). A question mark is below.

Options:
 

- Option 1: A 5x5 grid with a star at (1,4), a plus sign at (1,2), a circle at (1,3), and a right-pointing triangle at (1,4).
- Option 2: A 5x5 grid with a plus sign at (1,3), a circle at (1,4), a star at (2,1), and a right-pointing triangle at (2,4).



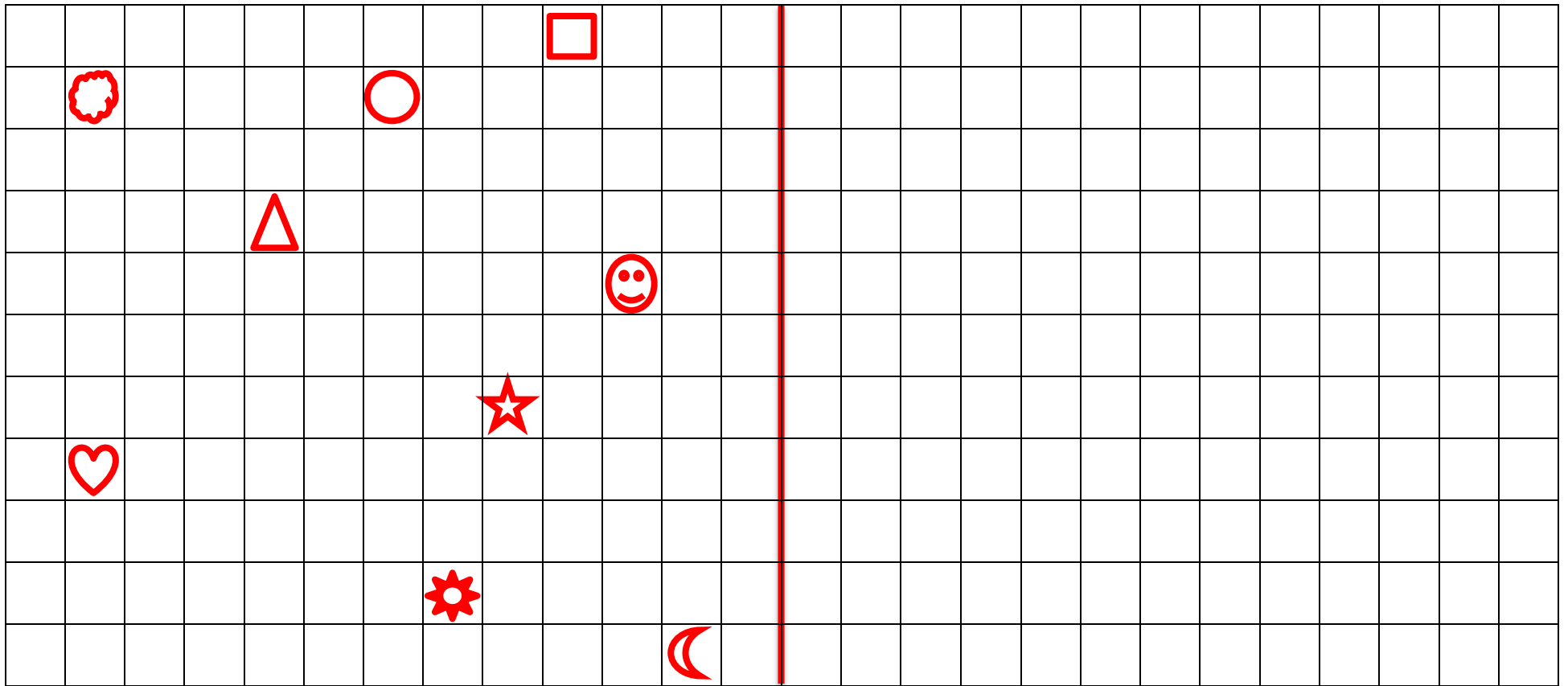
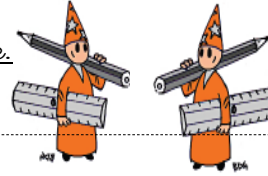
# Géométrie

Fiche 3

## La symétrie

1

Reproduis les dessins par symétrie par rapport à l'axe rouge.



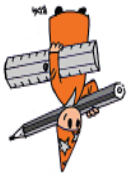
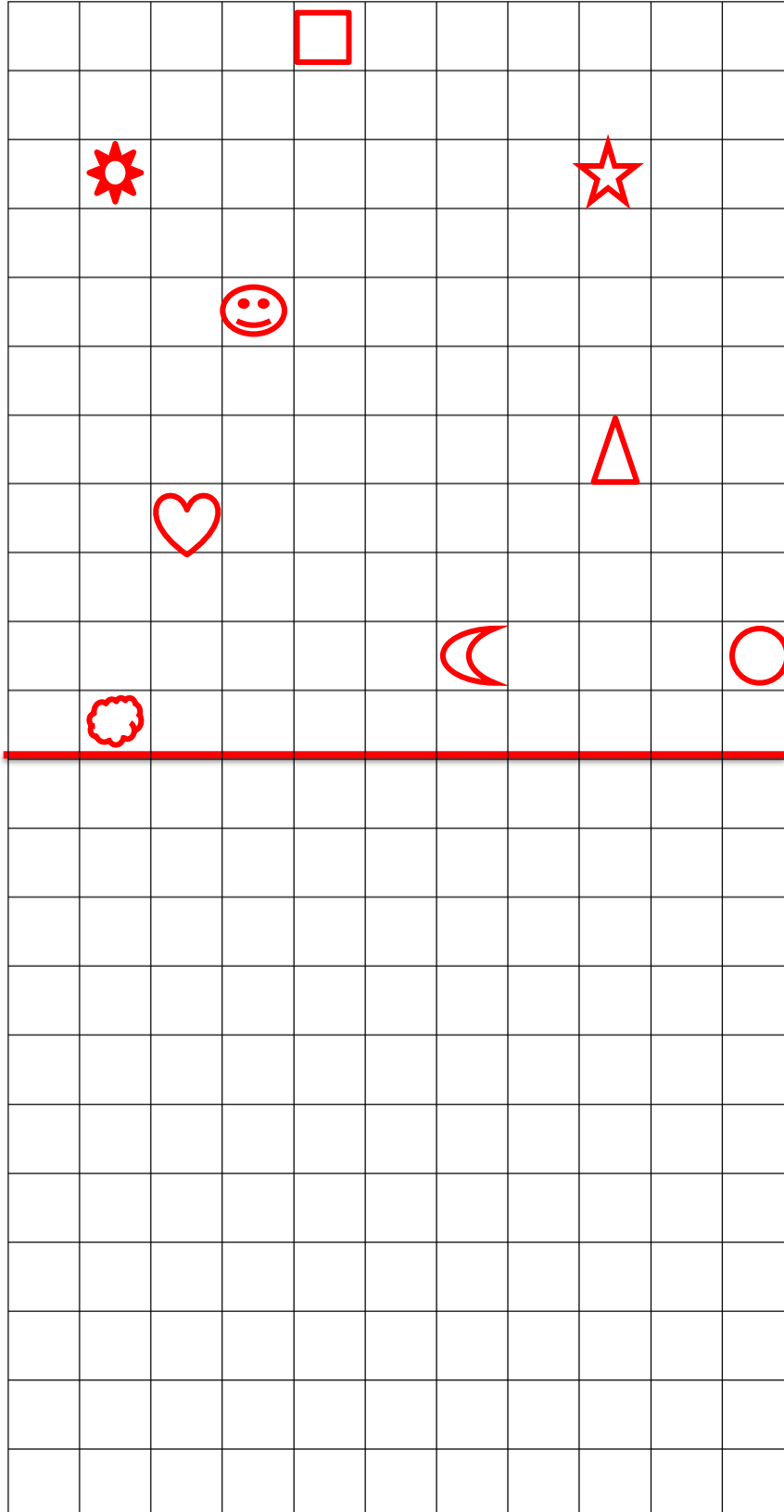


# Géométrie

Fiche 4

## La symétrie

1 Reproduis les dessins par symétrie par rapport à l'axe rouge.



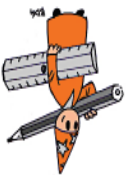
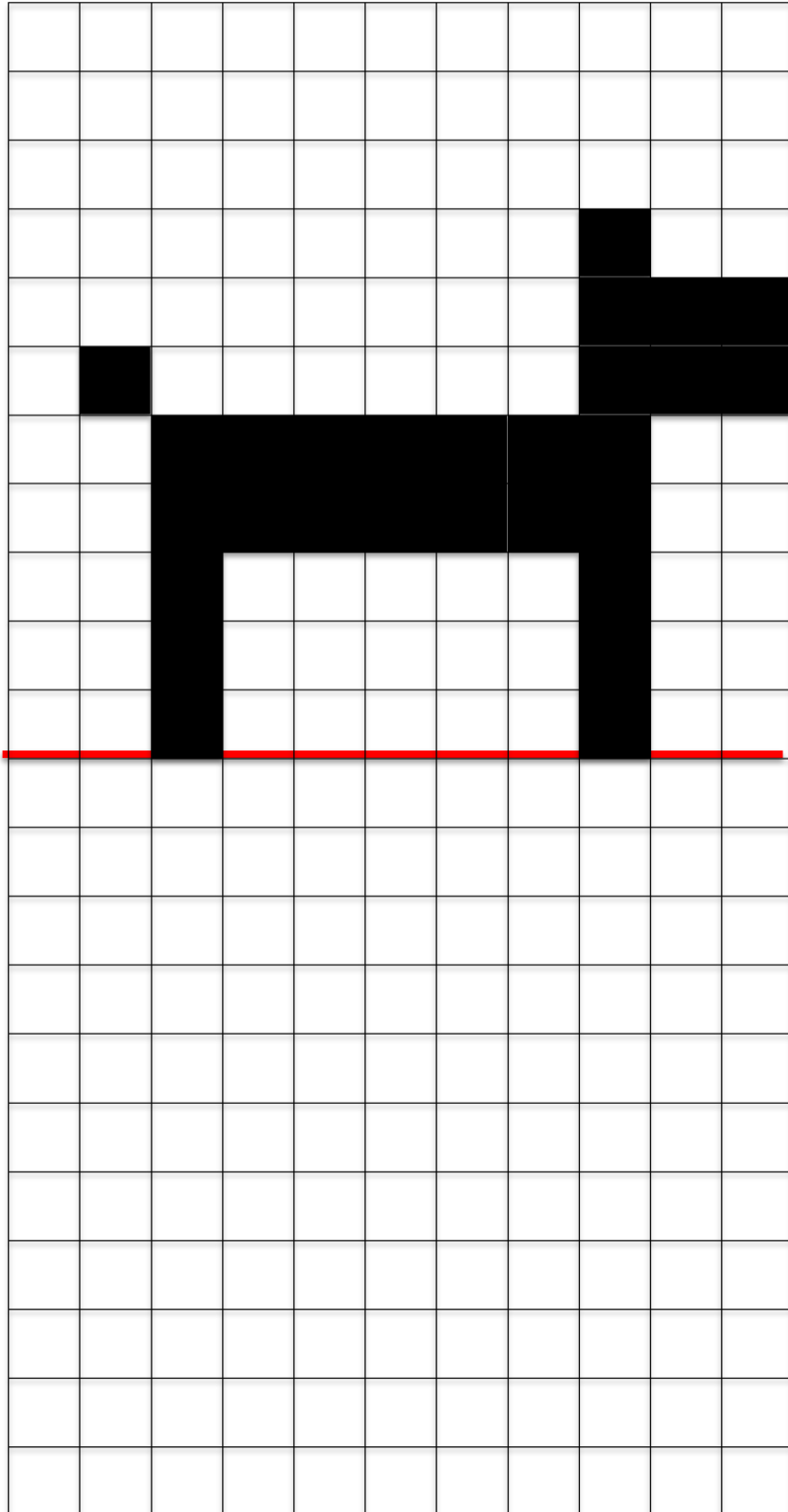


# Géométrie

Fiche 5

## La symétrie

1 Noircis les cases par symétrie par rapport à l'axe rouge.







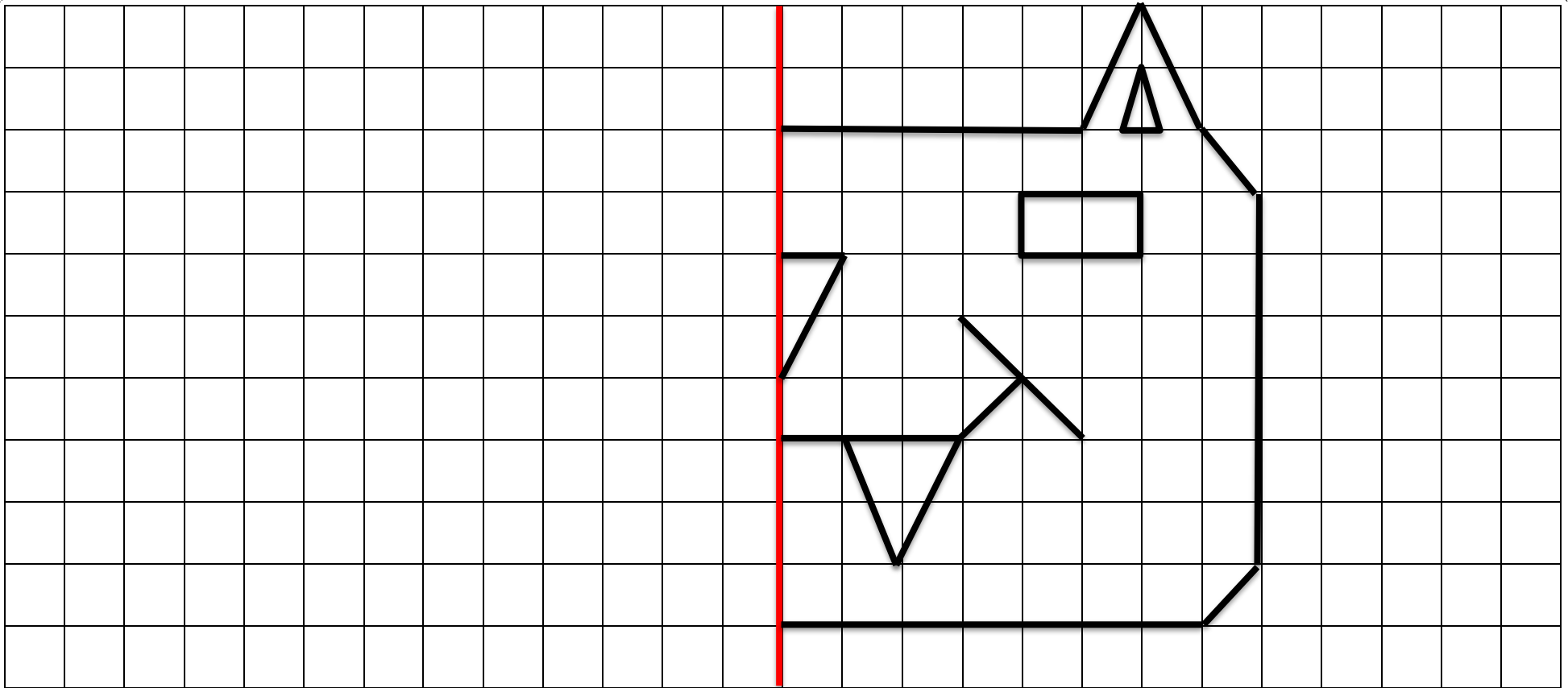


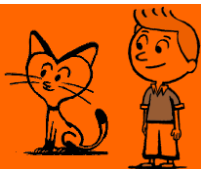
# Géométrie

Fiche 7

## La symétrie

1 Termine ce dessin par symétrie par rapport à l'axe rouge.



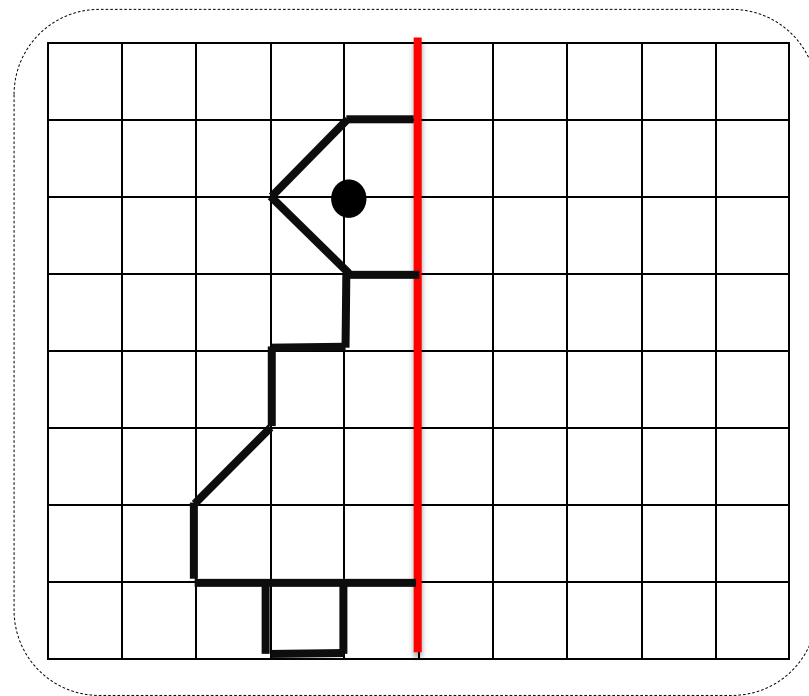
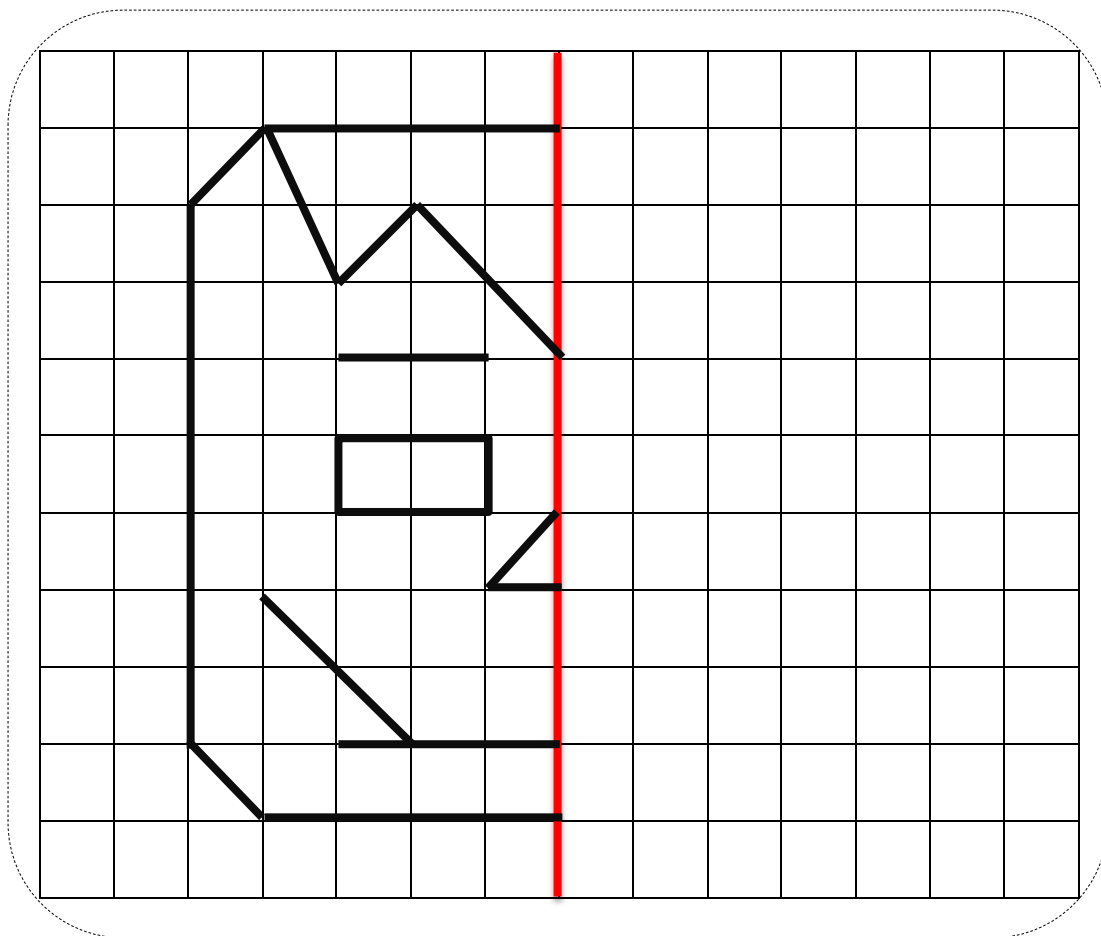


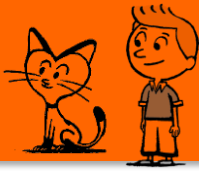
# Géométrie

Fiche 8

## La symétrie

1 Termine ces dessins par symétrie par rapport à l'axe rouge.



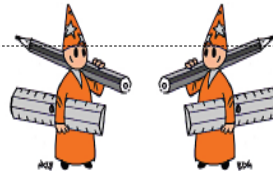
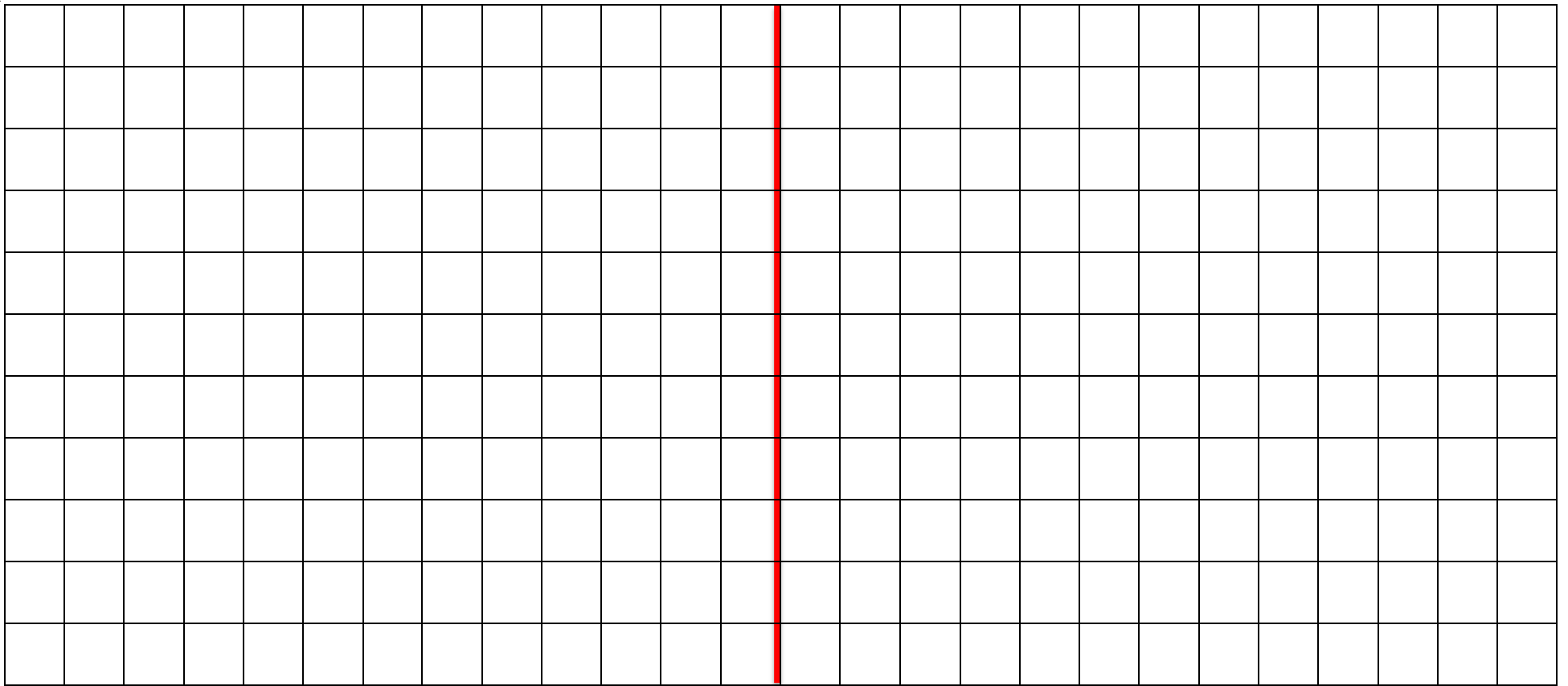


# Géométrie

Fiche 9

## La symétrie

1 *Fais un dessin dans une des parties du cadre et donne-le à camarade pour qu'il en fasse le symétrique.*



CE1