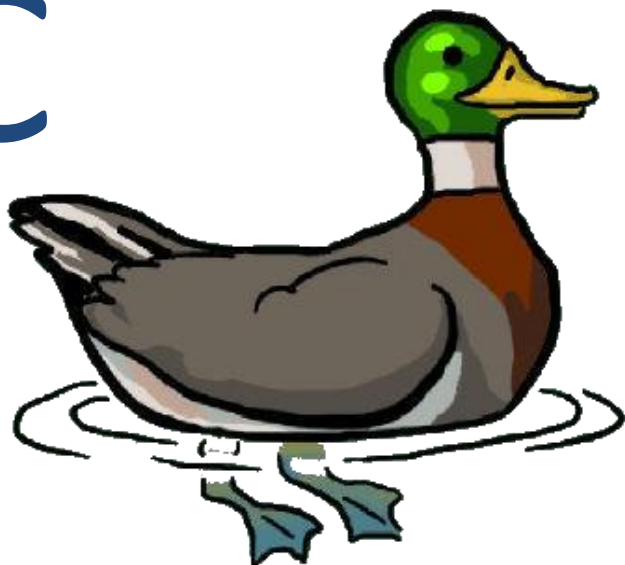


c C

c C C



un canard

qu QU

qu Qu



un masque

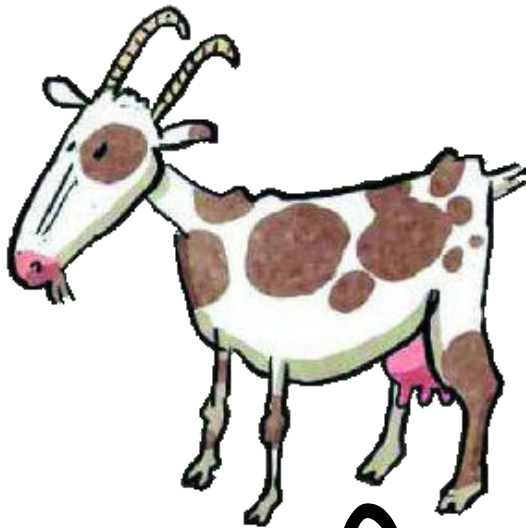
k K



k K K

un kimono

è È

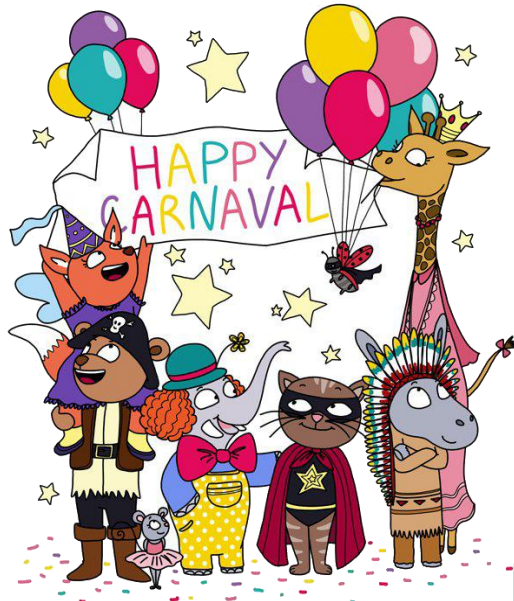


è È È

une chèvre

ê

Ê



ê

Ê

Ê

une fête

ai



ai

du lait

ei



ei

une reine

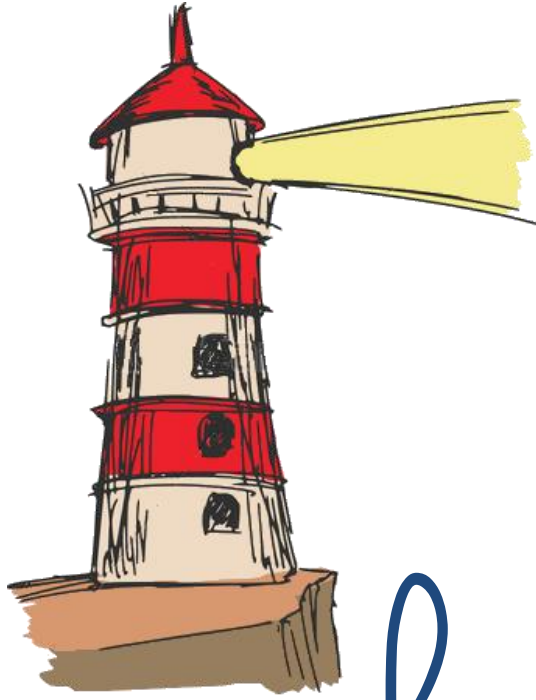
f F



f F F

un faucon

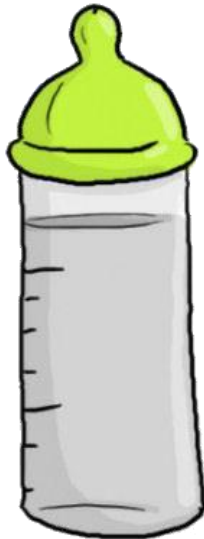
ph



ph

un phare

b B



b B B

un biberon

c e
i
y



c e
i
y

un citron

ç a
o
u



ç a
o
u

un garçon

on



on

un donjon

z Z

O

z Z

zéro

• s •



• s •

une rose

j J

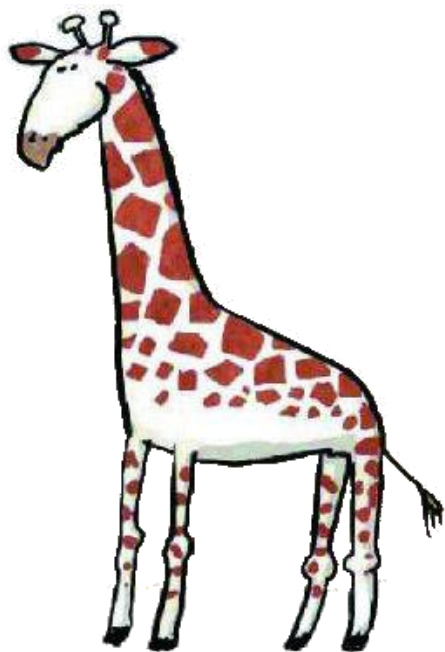


j J

jaune

gg

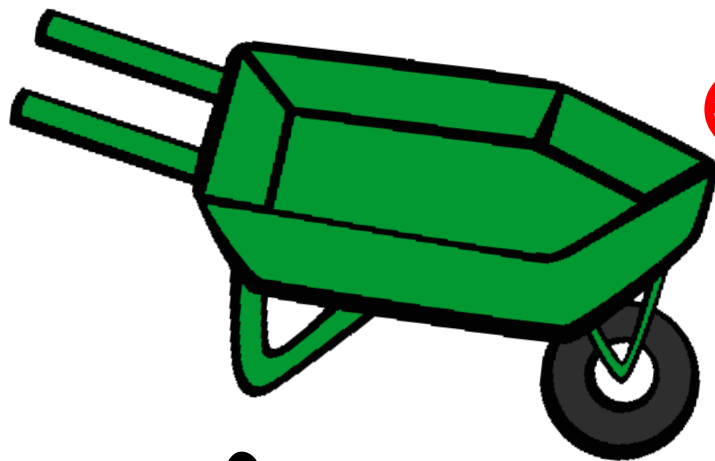
G



g g G

une girafe

e



e



une brouette

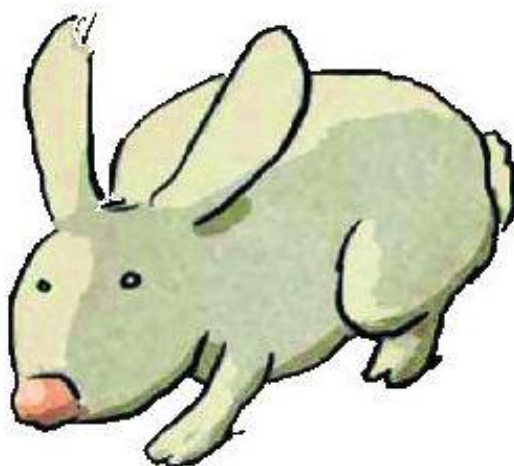
et



et

un paquet

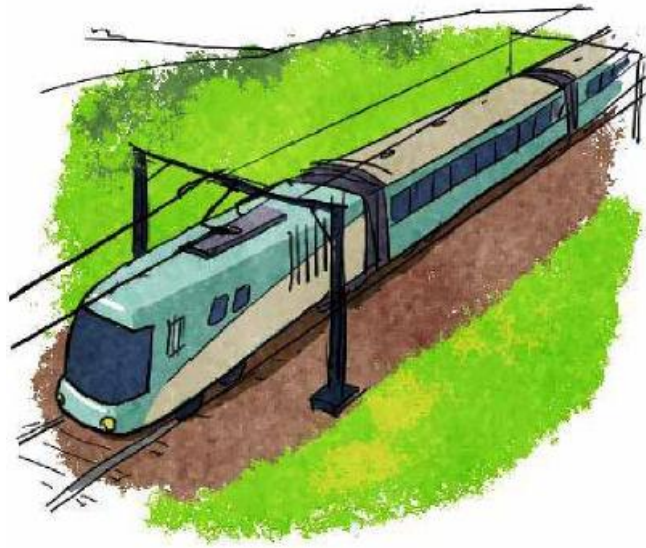
in



in

un lapin

ain



ain

un train

ein



ein

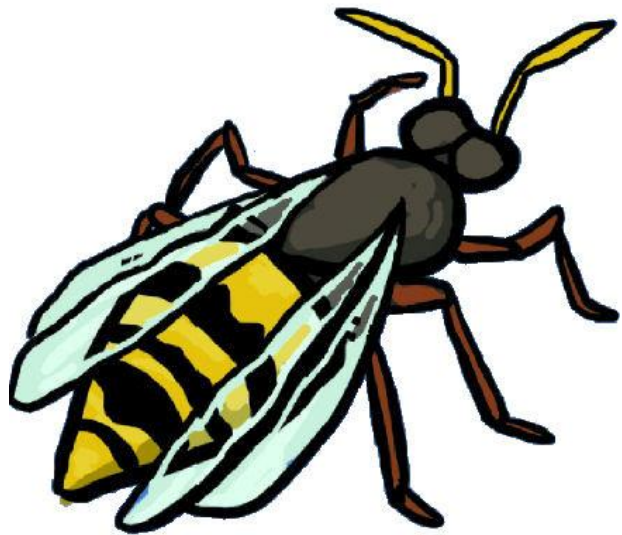
de la peinture

ga
a
o
u
i



r un gâteau

gu
i
e



une guêpe

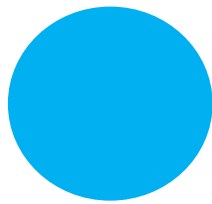
oi



oi

un oiseau

oin



oin

un point

eu

2

eu

deux

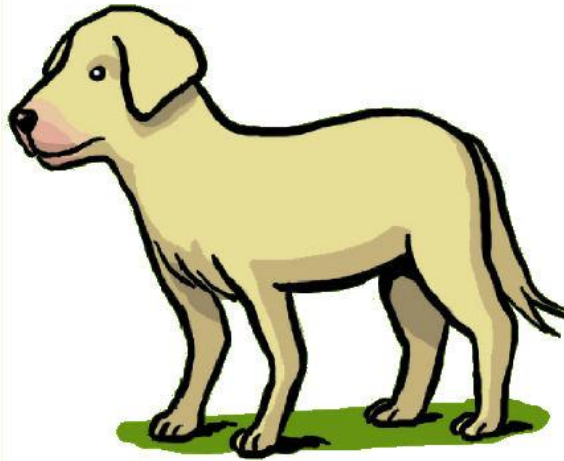
- eu •



- eu •

un pêcheur

ien



ien

un chien

ion

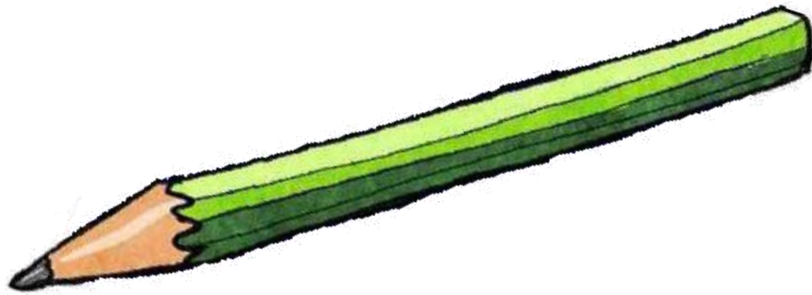
$$\begin{array}{r} 10 \\ + 12 \\ \hline 22 \end{array}$$

ion

une opération

•y•

•y•



un crayon

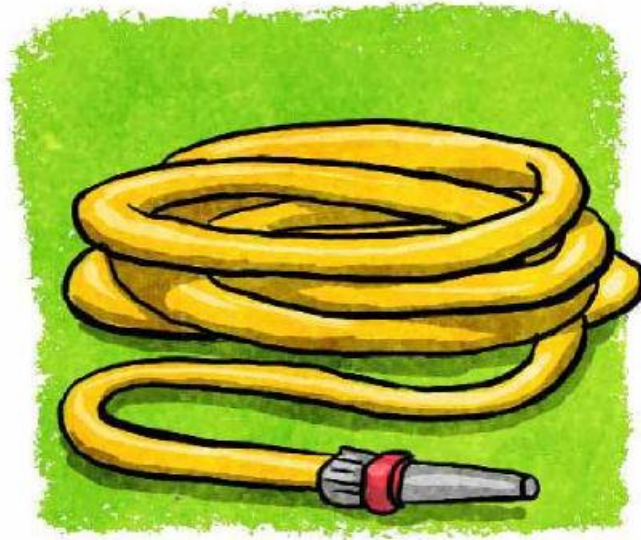
•y•

•y•



un noyau

•y•



•y•

un tuyau

aill•



aill•

une médaille

eill •



eill •

une abeille

ouill •



ouill •

une grenouille

euill •



euill •

une feuille

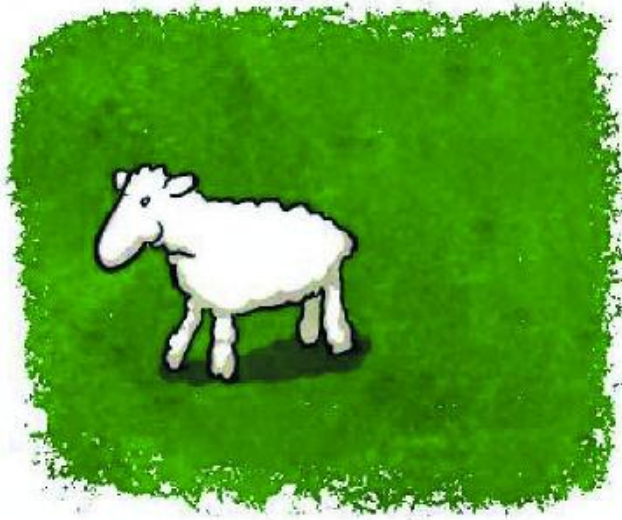
ill •



ill •

des billes

gn



gn

un agneau